

# Tracers with AMP<sup>®</sup>





# Manage risk and assess survey readiness across your organization.

Every day, accreditation leaders like you are left vulnerable and forced into a reactive approach because of competing priorities, limited time and overextended staff. The statistics are not in your favor. Health systems lacking consistent protocols and standardized processes have a safety performance rate that is roughly 11-14% lower than the top 15 systems.\*

A problem can come at anytime from anywhere throughout your organization. Ideally, you need to assess your survey readiness in real-time, identify where improvements are needed and put a plan in place to address the issues before a very costly crisis occurs.

\* This data comes from Truven Health Analytics annual ranking of hospitals, which is based on 14 different separate scores of hospital performance.

## How we can help

Tracers with AMP will give you the data and insights you need to efficiently manage risk and help your organization stay survey-ready. This web-based software solution anticipates, reduces and reports risk across your organization—putting you in control. You can analyze performance, compare sites and departments, and prioritize improvements with user-friendly dashboards and easy-to-build, automated reporting.

### KEY FEATURES

If you're looking to redesign your standards compliance program, turn to Tracers with AMP to:

- Save time by accessing a comprehensive sample library of tracer questions, which are linked to the Joint Commission Elements of Performance (EPs).
- Download and compare your staff's findings against actual Joint Commission survey results at both the site and system level to identify and analyze trends.
- Complete and automatically submit your FSA during intracycle monitoring.
- Improve efficiencies with the ability to crosswalk from Joint Commission standards and EPs to the related state regulations if you also license Edition Compliance Monitor® Plus.

### Tracers with AMP is available for the following health care settings:

- Hospital
- Critical Access Hospital
- Ambulatory
- Behavioral Health
- Home Care
- Laboratory
- Nursing Care Center
- Office-Based Surgery
- Disease-Specific Care

### Training and implementation

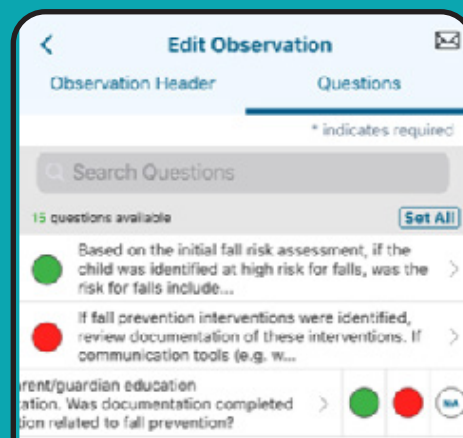
Joint Commission Resources experts not only understand the software but also have a deep understanding of standards and regulations, tracer methodology and the workflows that support it. We will provide you:

- Resources to support front line staff including on-demand training videos, monthly live training sessions with Q&A, and a continually updated user guide
- A library of approximately 20,000 regularly updated customizable tracer questions
- Best practices from other organizations
- An easy-to-use reporting system that accommodates all levels of technical abilities

**“Tracers with AMP has helped us with our goal to becoming a high reliability organization. Our survey results have really improved. On our last survey, the surveyor mentioned how engaged the staff was and the knowledge that they had. This tool is making sure that the staff feels comfortable with their knowledge and that they can deal well with the surveyor, rather than the old methodology of hiding.”**

**- Senior Director, Accreditation and Standards Regulatory Affairs**

Tracers with AMP's mobile application allows you to optimize tracer usage throughout your organization and quickly add notes via a voice to text and upload photos to include in reports.





## Intuitive business intelligence to make informed decisions

Tracers with AMP provides you with the ability to create customized reports by assessing data from multiple sources, including Accreditation Manager Plus®, self-collected tracer data, Requirements for Improvement (RFIs) data from Joint Commission surveys, and findings from the Tracers with AMP mock survey add-on module. These reports will allow you to view data at a glance and quickly identify key performance indicators, helping you to better analyze and view the data collected to help identify risks, prioritize improvement projects, and implement solutions.

- Identify risk and prioritize areas for improvements before a costly crisis occurs
- Compare site and departments to analyze performance and standardize best practices across your system
- Create transparency and increase communication by providing automated reports for leadership and frontline staff
- Gain a better understanding of your data with the option to view the data as a whole or drill into specific data points to gather additional insights

User can also proactively manage risk by setting alerts to notify them if a quality area (such as an Element of Performance) goes below a certain threshold.

### The customizable reports will help you to:

## Some of the robust capabilities of Tracers with AMP

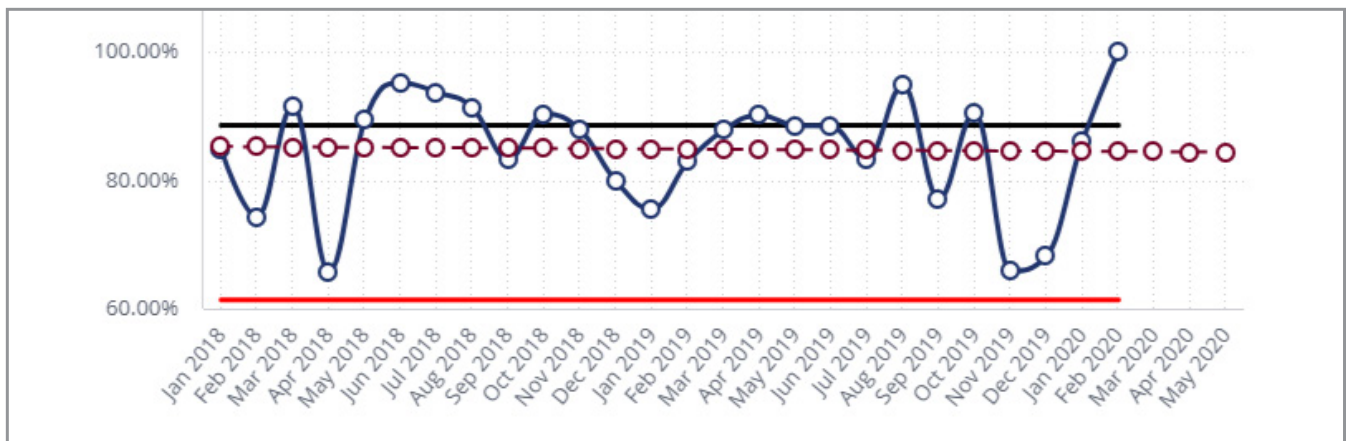


### Compare compliance across multiple sites

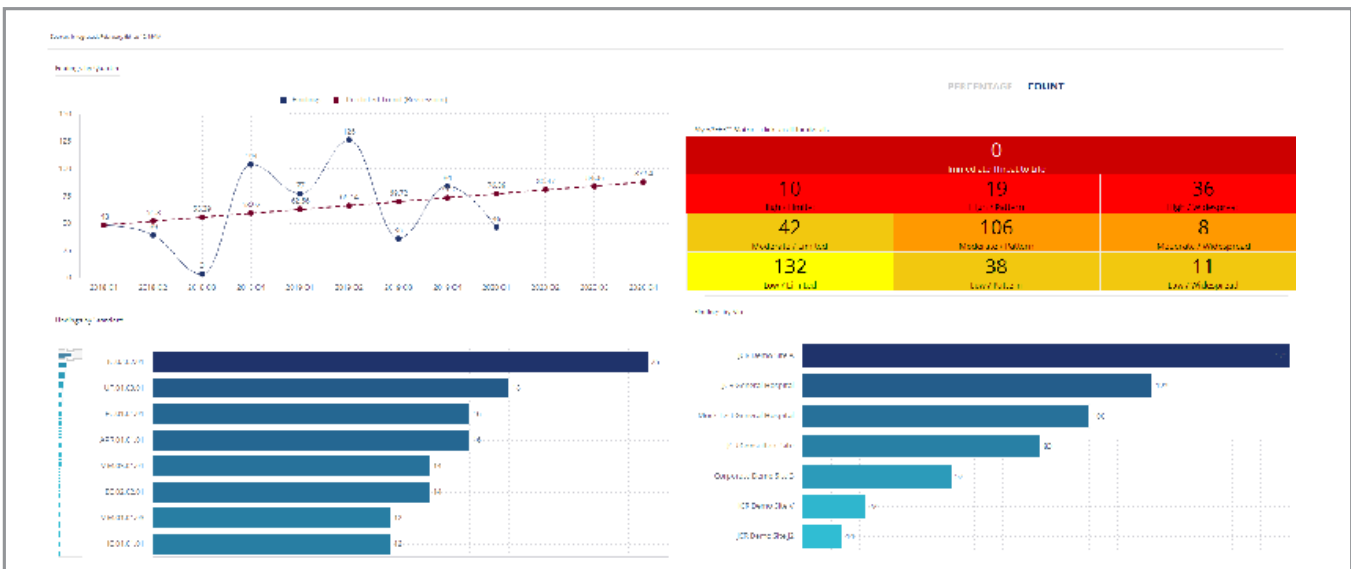
My SAFER™ Matrix - click a cell for details

<b>0</b> Immediate Threat to Life		
<b>0</b> High / Limited	<b>1</b> High / Pattern	<b>2</b> High / Widespread
<b>1</b> Moderate / Limited	<b>3</b> Moderate / Pattern	<b>0</b> Moderate / Widespread
<b>3</b> Low / Limited	<b>0</b> Low / Pattern	<b>0</b> Low / Widespread

### SAFER™ Matrix Report



**Build a control chart to determine tracer compliance over time. This can help you identify outliers and if your tracer activity is trending up or down.**



**Determine where findings fall in the SAFER™ Matrix across your system. Identify those high-risk findings before they become a patient safety issue.**

# Tracers with AMP plus CMS

Tracers  
with  
AMP +  
CMS

Manage your Joint Commission accreditation and CMS compliance with one unique tool

You're challenged to ensure CMS compliance across your organization. It doesn't help that CMS requirements are complex and constantly evolving—making it hard to understand the intent of the regulations or what CMS surveyors will be looking for when it's time for your survey.

## How we can help

With Tracers with AMP plus CMS, you'll get access to all of the robust features of Tracers with AMP and you'll be able to continuously assess and help trend readiness with both Joint Commission EPs and CMS Conditions of Participation (CoPs).

And, in the unfortunate event you ever receive a CMS violation, Tracers with AMP plus CMS can be used to help you manage your Plan of Corrections.

## KEY FEATURES

Adding the CMS module will allow you to:

- Save time with pre-populated CMS tracer templates that help identify critical CMS items
- Analyze your performance against CMS regulations
- Conduct compliance self-assessment, cross-referencing A-tags and C-tags

Tracers with AMP plus CMS is available for hospitals, critical access hospitals and ambulatory.

# Mock Survey Tool for Tracers with AMP

Mock  
Survey  
Tool

## Enhance your tracers program with mock surveys

Mock surveys are a critical tool when it comes to the continuous improvement of patient safety and helping you prepare for a Joint Commission survey. Coordinating mock surveys throughout your health system and consolidating findings from all locations into meaningful reports can be challenging and often time consuming. It is important to be proactive and identify tools to make mock surveys a regular part of your health system's process improvement program.

### How we can help

Tracers with AMP offers a feature that helps your staff to conduct useful mock surveys throughout your system. For a nominal fee, health systems can use Tracers with AMP to enter mock survey findings and create robust reports that allow your team to review mock survey results and help determine trends and the most pressing issues across your system. This feature offers various flexible workflow options where you can choose to enter mock survey findings, create final reports, trace and approve plans of action, and generate an executive summary.

### KEY FEATURES

---

Automating your mock survey process through Tracers with AMP will allow you to:

- Enter findings against the most up to date standards and regulations
- Generate reports in a SAFER™ Matrix format
- Compare findings to a hospital self-assessment and/or Joint Commission Requirements for Improvement
- Track and approve Plans of Corrections to help ensure problems are corrected

---

**Using Tracers with AMP, we find it very easy to compare internal mock survey findings with Joint Commission findings. We've seen 75% less findings from mock surveys to Joint Commission surveys. This validates the work our sites have done between surveys.**

**- Director Clinical Compliance and Accreditation**

---



**FOR ADDITIONAL INFORMATION**

Visit our website [www.jcrinc.com/tracers-with-amp](http://www.jcrinc.com/tracers-with-amp),  
or call 877.223.6866

Joint Commission Resources, Inc. (JCR), a wholly controlled, not-for-profit affiliate of The Joint Commission, is the official publisher and educator of The Joint Commission. JCR is an expert resource for health care organizations, providing consulting services, educational services, publications and software to assist in improving quality and safety and to help in meeting the accreditation standards of The Joint Commission.